



# Experiența trăită într-o bibliotecă universitară din Anglia

Bibliotecar,  
**Lenuța URSACHI**

# CUPRINS

- Înscrierea
- Prezentarea bibliotecii
- Date statistice
- Experiența
- Planuri

# ÎNSCRIEREA

The screenshot shows the Portsmouth City Council website. At the top is the council logo and a search bar. Below is a navigation menu with categories: Home, Living, Learning, Visiting, Business, and Your Council. A secondary menu includes links for Contact us, Report a problem, Apply, Pay, My collection day, and Freedom of information, along with social media icons for Facebook, Twitter, and YouTube.

**A-Z of services**

A	B	C	D	E	F	G
H	I	J	K	L	M	N
O	P	Q	R	S	T	U
V	W	X	Y	Z		

**In this section**

- [Effective Learning](#)
- [Community Learning](#)
- [Early learning and childcare](#)
- [Libraries](#)
- [PAWS Community Nursery](#)
- [Plans & Policies](#)

[Home](#) | [Learning](#) | [Libraries](#) | [Volunteering in libraries](#)

## Volunteering in libraries

Last updated: 15 October 2013 11:50 UK

Volunteers can get involved in a variety of activities at Portsmouth libraries. There's something for everyone, whatever your interests and the time you have available. New roles are always being developed, so please check this page for updates.

By volunteering with us you can develop your skills, meet new people and contribute to your local community.

We'll give you support and train you for whatever role you're interested in. This may be shadowing, just talking through what's involved or an occasional training session.

If you're interested in any of the volunteering opportunities below, download and complete the expression of interest form from the Associated documents section below. Email the completed form to [libraries@portsmouthcc.gov.uk](mailto:libraries@portsmouthcc.gov.uk) or post to the volunteer coordinator at Portsmouth Central Library in Guildhall Square, PO1 2DX.

For more information on volunteering opportunities in Portsmouth libraries, phone 023 9268 8066 or learn more about other [volunteering opportunities](#) in Portsmouth.

# ÎNSCRIEREA

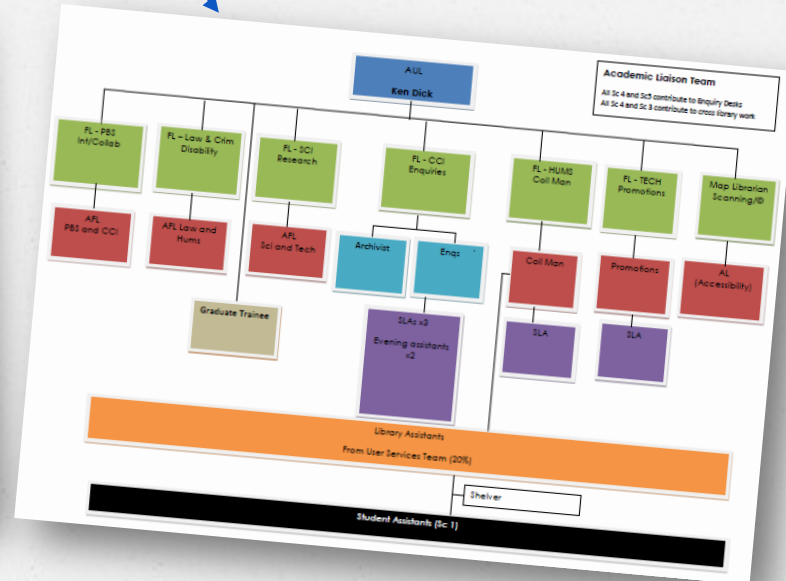
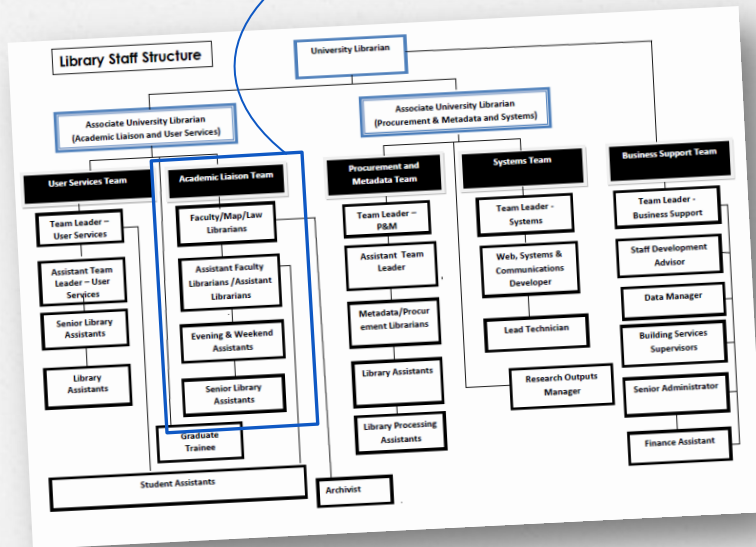


Biblioteca publică



Biblioteca universitară

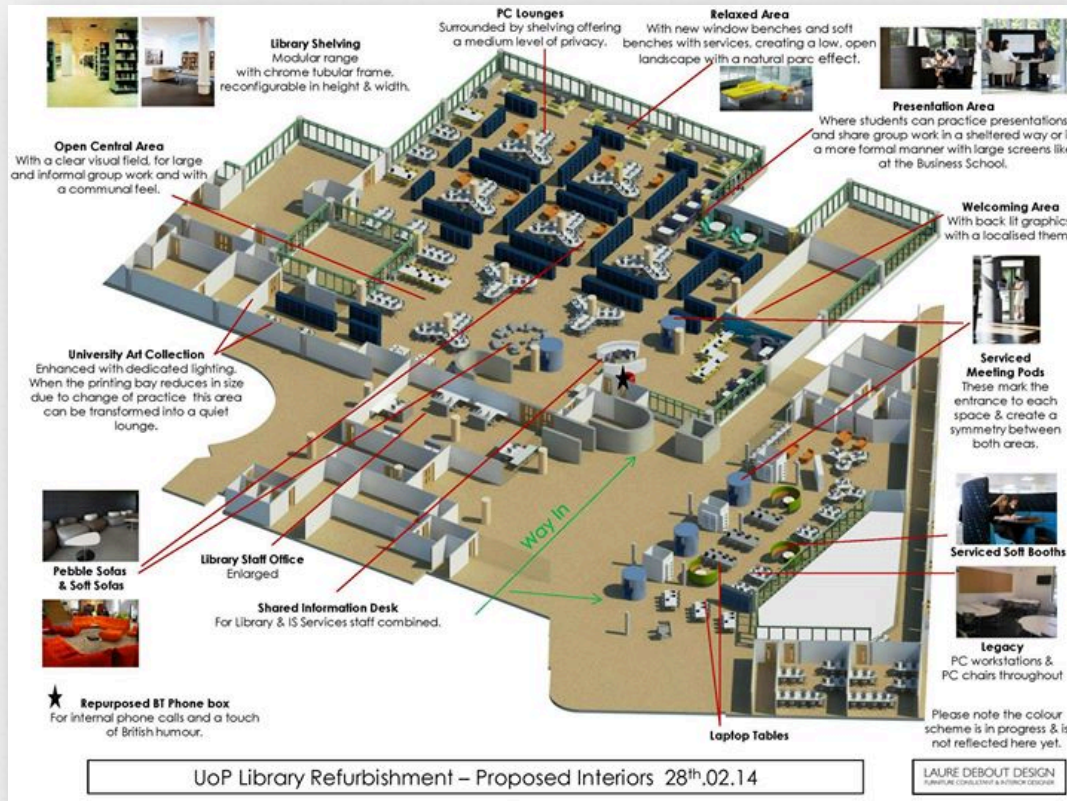
# Prezentarea bibliotecii



Organigrama bibliotecii

Organigrama Academic Liaison Team

# Prezentarea bibliotecii



- sf. mai-sf. septembrie
- Shared service desk  
207 spații de studiu:  
160 spații computere  
spații cu prize
- lărgirea spațiilor de socializare și studiu în grup
- suplimentar cu 2 camere de studiu în grup

## Planul de reamenajare a parterului bibliotecii

# Prezentarea bibliotecii



# Prezentarea bibliotecii

- Dewey Classification
- Documente:
  - cărți, cărți rare, e-book-uri
  - reviste, hărți, acte legislative
  - baze de date online
- Repartizare fond:
  - parter: științe și tehnologie
  - etaj 1: științe sociale și economice
  - etaj 2: arte, științe umaniste
  - etaj 3: work/eat/play
- Structură
  - fără filiale

## Know your loan periods



Blue	=	1 day loan
Yellow	=	1 week loan
No label	=	4 week loan

You can renew your books online using the Library catalogue



# Prezentarea bibliotecii



**RESTITUIREA**



**ÎMPRUMUTUL**



<http://youtu.be/eeoqI97RnEs>



# Prezentarea bibliotecii



**COPIEREA**



**SĂLI DE STUDIU**



10

# Prezentarea bibliotecii

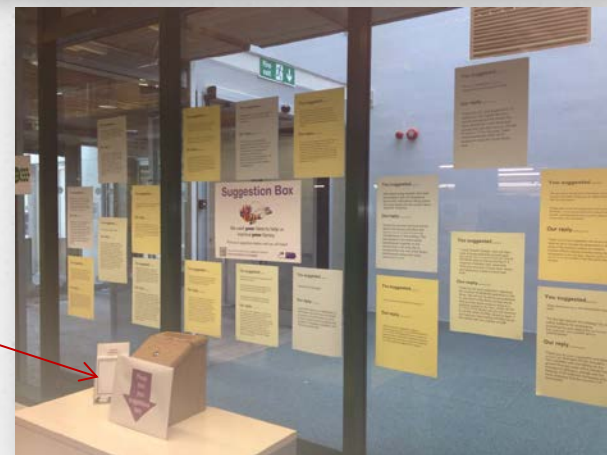
## The Suggestion Box

### Most Recent Suggestions

306	03/04/14	Strict rules	Rejected	<a href="#">View &amp; comment (1)</a>
305	03/04/14	Upgrade the postgrad suite	Under Review	<a href="#">View &amp; comment (1)</a>
304	02/04/14	One access gate to all areas of the library rather than two	Approved	<a href="#">View &amp; comment (1)</a>
302	31/03/14	Get more plugs!	Approved	<a href="#">View &amp; comment (1)</a>
301	31/03/14	Temperature control. the library is either too hot or freezing!	Approved	<a href="#">View &amp; comment (1)</a>

[View All Suggestions](#)

**CUTIA CU  
SUGESTII**



//

# Prezentarea bibliotecii



## EVENTIMENTE

12

# Date statistice



Portsmouth Business School  
Faculty of Creative and Cultural Industries  
Faculty of Humanities and Social Sciences  
Faculty of Science  
Faculty of Technology

# Date statistice



## Biblioteca

80 bibliotecari

aprox. 20 bibliotecari calificați

> 1,100 locuri

5 mil GBP buget anual

> 400,000 volume cărți

> 1,000 titluri reviste tipărite

>70,000 e-book-uri

aprox. 17,000 e-journals

> 200 baze de date

# EXPERIENȚE

## Săptămâna 1

- Discuții zilnice cu șeful echipei Academic Liaison Team
- Întâlniri cu doctoranzi
- Cercetare bibliografică
- Analiza paginii web

## Săptămâna 2

- Inventar la raft reviste 31, 330, 658
- Pagini web ale revistelor 31, 330, 658
- Analiza citărilor pentru articolele din Parade ale bibliotecarilor UoP

# EXPERIENȚE

- Relația cu comunitatea academică
- Proiectul de reamenajare
- Perfecționarea personalului
- Organizarea workshop-urilor



Discuții zilnice cu șeful echipei Academic Liaison Team

16



# EXPERIENȚE

## Săptămâna 1

### Softuri

Managementul referințelor

Antiplagiat

Chestionarea online

### Baze de date

Baze de date abonate

Accesul la distanță

Depozite digitale

### Vizibilitate

Statistica bibliotecii

Profiluri științifice pe web

Discuții zilnice cu șeful echipei Academic Liaison Team

17

# EXPERIENȚE

## Săptămâna 1



- Întâlnirea cu studenții (EndNote Basic)
- Întâlnirea cu studenții (EndNote X6)
- Cercetare bibliografică (costurile cu serviciile)
- Cercetare bibliografică (monitorizarea utilizatorilor)



# EXPERIENȚE

## Analiza paginii web

University of Portsmouth Library

Discovery Catalogue eJournals Reading Lists Website more ...

Search Discovery for books & articles across a range of databases

All Subjects You can limit your search by subject

Home About Us Help & Support Services & Facilities Information Resources My Subject Essentials

News

Contact Us

Locations & Opening Times

Library Refurbishment

Referencing@Portsmouth

Used Books For Sale / Wanted

Support

Referencing

Employability

Information

The University Library - supporting you on all sides

- [Ground floor refurbishment](#)
- [Your Library is open 24/7 until 30 May](#)

Five ways to [Renew your Loans](#)

See our [Known Problems Page](#) for possible solutions to issues accessing e-resources

**The Suggestion Box**

- Suggest ways we can improve your Library
- View & comment on other's suggestions

What do **you** think?

**Library Essentials ...**

- [Latest Changes](#)
- [Known Problems](#)
- [Getting Started Online](#)
- [Opening Hours & Locations](#)
- [My Account](#)
- [Borrowing, Renewals & Fines](#)
- [Information Resources](#)
- [Referencing](#)
- [Services for Disabled Students](#)
- [Reading Lists](#)
- [UPLit](#)
- [Chat to a Librarian](#)

Library Guides

Reading Lists

Bibliometrics

UPLIFT

Reference management tools

Pure, Parade, Ethos, Moodle

Suggestion Box

19

# EXPERIENȚE

## Săptămâna 2

### Luni

Inventar la raft reviste 330, 658, 31

### Marți

Inventar la raft reviste 31  
Cercetare web reviste 31,  
330, 658

### Joi

Analiza citărilor în WoS,  
Scopus și Google scholar

### Miercuri

Cercetare web reviste 31, 330, 658

### Vineri

Discuții finale (împrumutul interbibliotecar, Reading lists, Zoho, Bomgar, servicii cu plată și gratuite, statistica de bibliotecă etc.)

# EXPERIENȚE

Home  
About  
Policies  
Search  
Browse by Year  
Browse by Subject  
Browse by Department  
Browse by All  
Authors/Editors  
Browse by University of  
Portsmouth Authors  
Login  
Dissertations@Portsmouth  
Library homepage

## Welcome to Parade@Portsmouth

### What is Parade?

Parade is the University of Portsmouth's institutional repository of research outputs (e.g. journal articles, books, exhibitions and other publications) produced by its academic and research staff. Parade can be accessed by anyone online. [Latest additions.](#)

### Quick Search

[Advanced search](#)

### Information for University of Portsmouth staff

From 1st January 2014 the University of Portsmouth's [Open Access Publication Policy](#) applies to all peer-reviewed papers published in a journal or conference proceedings. **It requires staff to add research outputs to Pure.** A copy of these outputs will be automatically be added to Parade (and staff profile web pages) after they have been verified by the Library. For more information, please see the [page about Open Access on the Library's website.](#)

### What are Pure and Parade?

Pure is the Research Information Management System that will be used as the interface to deposit research outputs in the institutional repository (Parade). They are two separate, but related, systems:-

- **Pure** is a current research information management system (CRIS), which will be used to address many of the University's information and reporting requirements relating to research activities. 'Research Outputs' added in Pure will also automatically be added to Parade. In addition to research outputs and associated metadata, Pure can also store information about research staff (profiles), projects, activities and collaborations. The system is being implemented in phases and Pure will be

+

## Afișarea rezultatelor

Index autor

Gruparea pe tip publicație

Detalierea înregistrării

Referința bibliografică (în prim plan)

Afișarea statisticilor

-

## Regăsirea rezultatelor

Căutarea după frază

Indexarea publicațiilor

Subiect (domenii din universitate)

# EXPERIENȚE

**BOMGAR™**

SERVICES RESOURCES ABOUT CONTACT

The Box T

Remote Support  
devices.

Have Questions? X  
How can we help you today?  
CHAT WITH SALES  
CHAT WITH SUPPORT

BOMGAR

PRODUCTS TRY BOMGAR

**#1** in Enterprise Remote Support Because we're Designed for the Enterprise (SOURCE: IDC) | [COMPARE US TO THE COMPETITION](#)

<http://www.bomgar.com/>

22

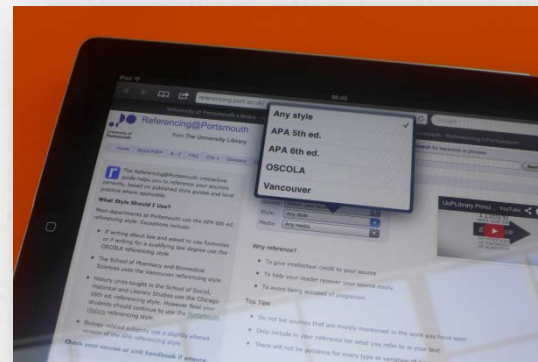
# PLANURI

## Dezvoltarea secțiunii **Referințe** de pe pagina web a bibliotecii

### **Redenumirea și dezvoltarea secțiunii**

#### **Tutoriale**

- ✓ instrumente pentru cercetarea științifică
- ✓ managementul referințelor (Mendeley, Zotero, EndNote)
- ✓ utilizarea bazelor de date online (2-3 materiale)
- ✓ evaluarea resurselor Internet (dezvoltarea informațiilor)



# PLANURI

## Dezvoltarea secțiunii **Referințe** de pe pagina web a bibliotecii

### Crearea de noi ghiduri

- ✓ Bibliometrie
- ✓ Reading lists (bibliografii discipline)
- ✓ Subject guides (domenii universitate)
- ✓ Stiluri de citare utilizate la UDJG





# PLANURI



- ✓ Cercetarea științifică pas cu pas (noi instrumente de lucru)
- ✓ Marketing de bibliotecă (contact, semne de carte etc.)

# PLANURI



## Lenuța URSACHI

Biblioteca Universității „Dunărea de Jos” din Galați

Referințe și cercetare bibliografică

tel.: 0336 130 134

e-mail: [lenuta.ursachi@ugal.ro](mailto:lenuta.ursachi@ugal.ro)

[http://www.lib.ugal.ro/Intreaba\\_bibliotecarul.html](http://www.lib.ugal.ro/Intreaba_bibliotecarul.html)

